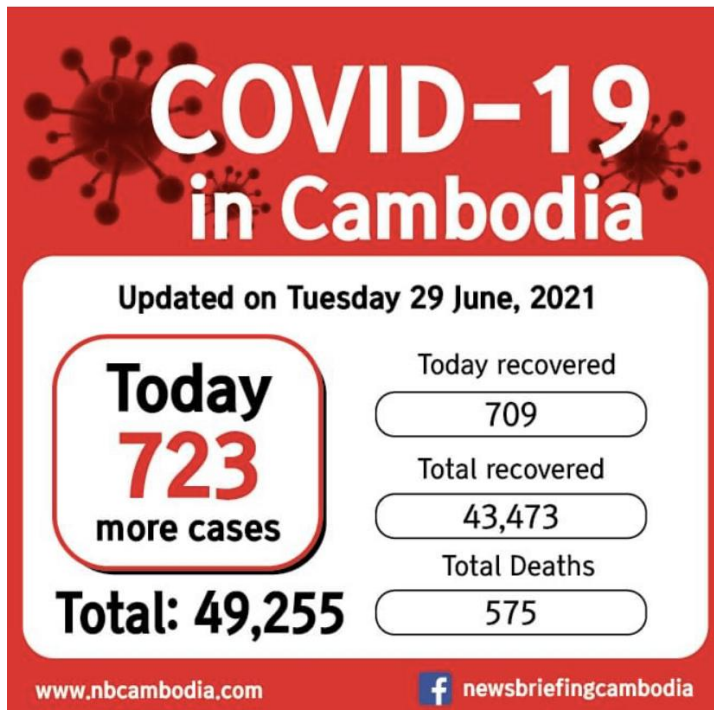


June 29, 2021

COVID-19 Is Too Close to Home



With all of our students vaccinated with China's Sinovac, we were all feeling more at ease although we continued to be vigilant about taking all the necessary precautions.

Unfortunately, one of our students came in very close contact with someone who has tested positive to COVID-19 this week. She spent time with her very close friend who was also fully vaccinated with Sinovac.

As soon as we found out that she had spent time with her friend who tested positive, we had her tested immediately and found

her to be negative. However, we know that there is a 14-day incubation period if she had contracted the virus. We have decided to place the dorm under a semi-lockdown and suspended all in-person activities including daily devotion and English classes. The students are also not allowed to eat together for the next 14 days except with their roommates. Fortunately, all of the students are in high spirits and don't mind the new restrictions placed on them for their safety.

Please pray for us as the current situation in Cambodia does not seem to be improving. It is unfortunate that many Cambodian people have stopped taking precautions as soon as the lockdown was lifted and have not been social distancing or keeping their masks on. We seem to experience more outbreaks in factories and markets for obvious reasons.

The total number that we quoted in our last newsletter at the end of May was 28,237. A month later, the total number today is **49,255**. That's more than 20,000 new cases in the last 30 days. Please pray for Cambodia as you pray for the safety of the students at SWH.

The Rainy Season Is Here!



Yes, it's that time of the year! When it rains in Cambodia, it RAAAAAINS!!! It pours as if the whole world is going to fall apart. And with drainage issues, about 15-20 minutes of such POURING leaves the city flooded. The picture on the left is a view from the rooftop of the Susanna Wesley House. The picture on the right shows the flood from the ground level.



You'd think the SWH students would be upset about the flood or having to drive their moto (moped or motorcycle) through such rain or rain leaking into their room from the ceiling! But our students are way above what the world or the nature throws at them. They understand that the problems of the world will not go

away through complaints, frustration, or pessimism. Just like the saying, "when life gives you lemons, make lemonade," when life floods your rooftop, you should help each other to **WATER SLIDE!!** We love our students and their love for life. Thank you for supporting and helping these wonderful students to enjoy life as they continue to dream about and look forward to their future! THANK YOU!

How to Support: An annual tuition for most of the universities in Phnom Penh is about \$500.

Online support: <https://advance.umcmmission.org/p-393-children-and-youth-scholarships.aspx>
Children and Youth Scholarships; Advance # 3020791

To donate by check: Please make your check payable to **Advance GCFA** and write the **Advance # 3020791** on the memo line. (Address: Advance GCFA PO Box 9068 GPO New York, NY 10087-9068)

Contact: Janice Lee (Susanna Wesley Dormitory Coordinator) - janicechristian@gmail.com